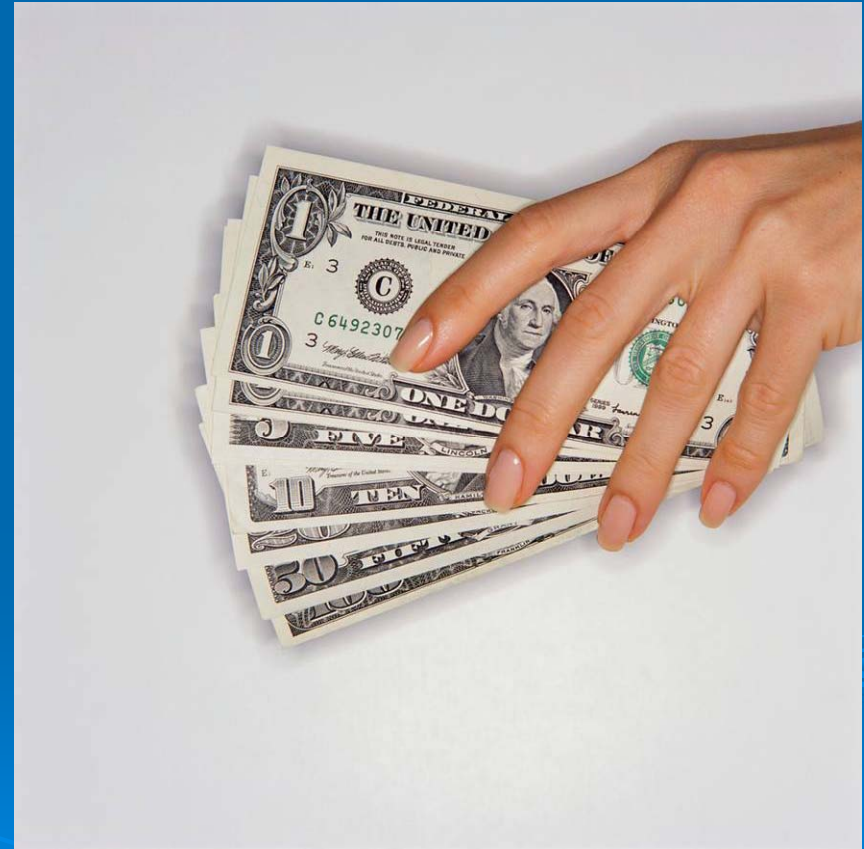


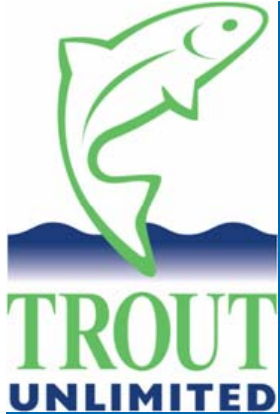
# Sources of Funding for Road/Stream Crossing Projects



# Sources of Funding

- Non-Governmental Organizations
- State
- Federal





# Embrace-A-Stream

## Coldwater Trout Streams

- Chapters and Councils must apply
- Require significant TU volunteer involvement
- Up to \$10,000 with 1:1 match required
  - September – Applications Available
  - November – Notify regional EAS committee member
  - December – Application Due
  - March – Awards Announcements

➤ <http://www.tu.org/conservation/watershed-restoration-home-rivers-initiative/embrace-a-stream>

• **Michigan TU** [www.michigantu.org](http://www.michigantu.org) & **KVCTU** [www.kvctu.org](http://www.kvctu.org)

• **Little Elkhart** [www.lectu.org](http://www.lectu.org)

# FishAmerica Foundation

## ➤ General Conservation Projects

- Awards average \$7,500
- Applications year-round
- Non-profit conservation groups and state agencies
- Specifically mentions culvert removal/replacement projects
- <http://www.fishamerica.org/grants/>



# National Fish and Wildlife Foundation



## ➤ Keystone Initiative Grants

- **Freshwater Fish Conservation Initiative**
  - Mentions removal of barriers
  - Pre-proposal April 1 and October 1
  - Full proposal June 1 and December 1
  - Require 1:1 matching (non-federal) funds
  - Prefer 2+:1 match
  - <http://www.nfwf.org/>



# National Fish and Wildlife Foundation



## ➤ Bring Back the Natives

- Restore native aquatic species
- Sensitive or listed aquatic species
- Requires \$2:1 non-federal to federal match
- <http://www.nfwf.org>

# National Fish and Wildlife Foundation



## ➤ Five-Star Restoration Matching Program

- Community based--ideally five organizations
- Part of a larger watershed or community effort
- Wetland, riparian, coastal habitat restoration
- MUST include education component
- Applications due ~ February
- Award average - \$20,000
- Requires \$1:1 match, prefers 2+:1
- <http://www.nfwf.org/>

# National Fish and Wildlife Foundation



## ➤ Sustain Our Great Lakes

- State or local governments, tribes, non-profit
- Preserve or restore tributaries, wetlands
- Community based
- Awards are \$25,000 to \$150,000
- Requires \$1:1 non-federal match
- [www.sustainourgreatlakes.org](http://www.sustainourgreatlakes.org)



# State Coastal Zone Management Programs



## ➤ Funded by NOAA

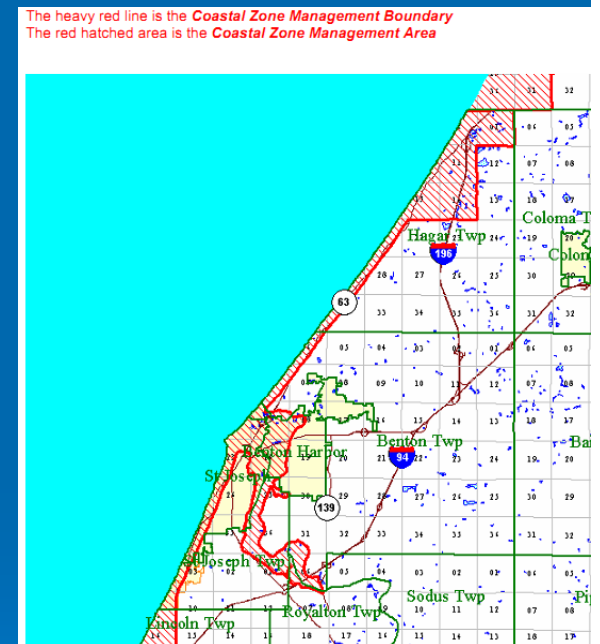
- 1:1 Match (non-federal)
- up to \$50,000

## ➤ Michigan DEQ

- [www.mi.gov/coastalmanagement](http://www.mi.gov/coastalmanagement)

## ➤ Indiana (IDNR)

- northern portion of Lake, Porter, and LaPorte counties
- <http://www.in.gov/dnr/lakemich/6039.htm>



# NOAA Open Rivers Initiative

- Locally driven barrier removal projects
- \$6,000,000 total
- Typical awards \$200,000 to \$750,000




<http://www.habitat.noaa.gov/funding/ori.html>



# Clean Water Act - 319

## Implementation Funding

- Implementing BMPs that reduce sediment, nutrients and other pollutants from nonpoint sources in the watershed
  - Must have an approved Watershed Management Plan (SJRW has one)
  - Requires 25% match
- 

# Great Lakes Commission

## Soil Erosion and Sedimentation Control

- Reducing sediment in the Great Lakes
- Funded a road-stream crossing project in Van Buren County



# Army Corps of Engineers

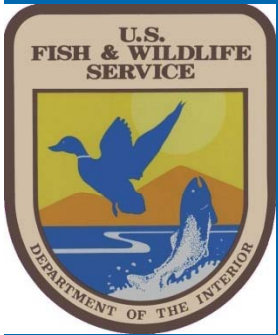
## Section 206 – Aquatic Ecosystem Restoration

- Plan, design and build
- Improve environment, public interest, cost effective
- ACE - 1st \$100,000 feasibility study costs
- Match - 50% of feasibility after \$100,000  
35% design and construction,  
50% recreational features and  
100% operation and maintenance



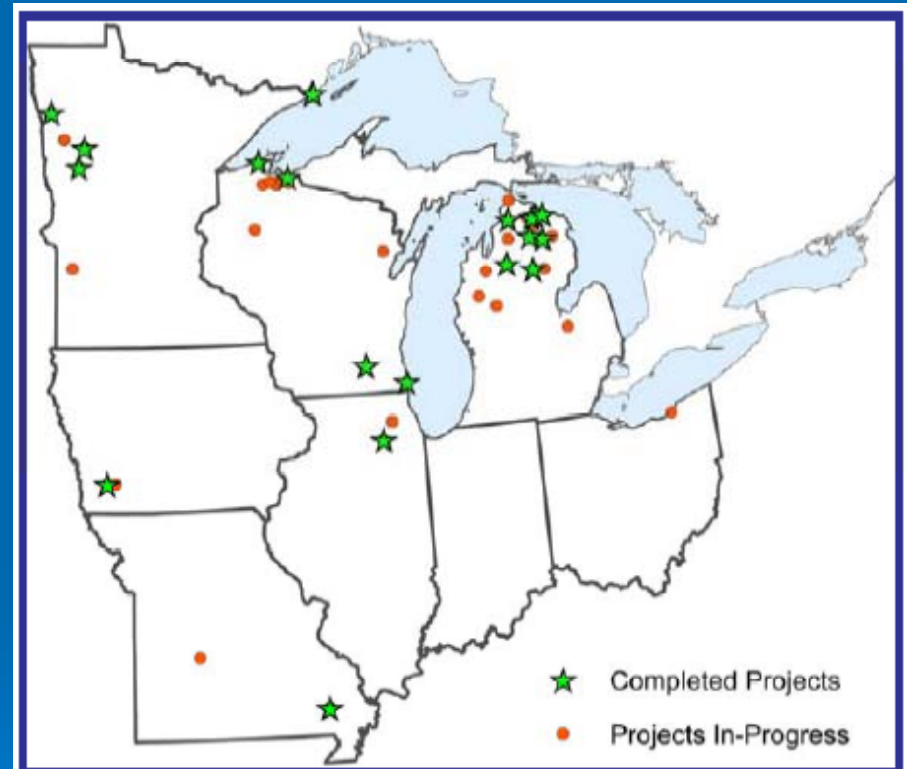
# US Fish & Wildlife Service

- National Fish Passage Program
- Partners for Fish and Wildlife
- Great Lakes Basin Fish Habitat Partnership
- Great Lakes Fish and Wildlife Restoration Act



# National Fish Passage Program

- Watershed-based Approach
- Funded the SJRW road/stream crossing inventory
- Required match 1 to 1

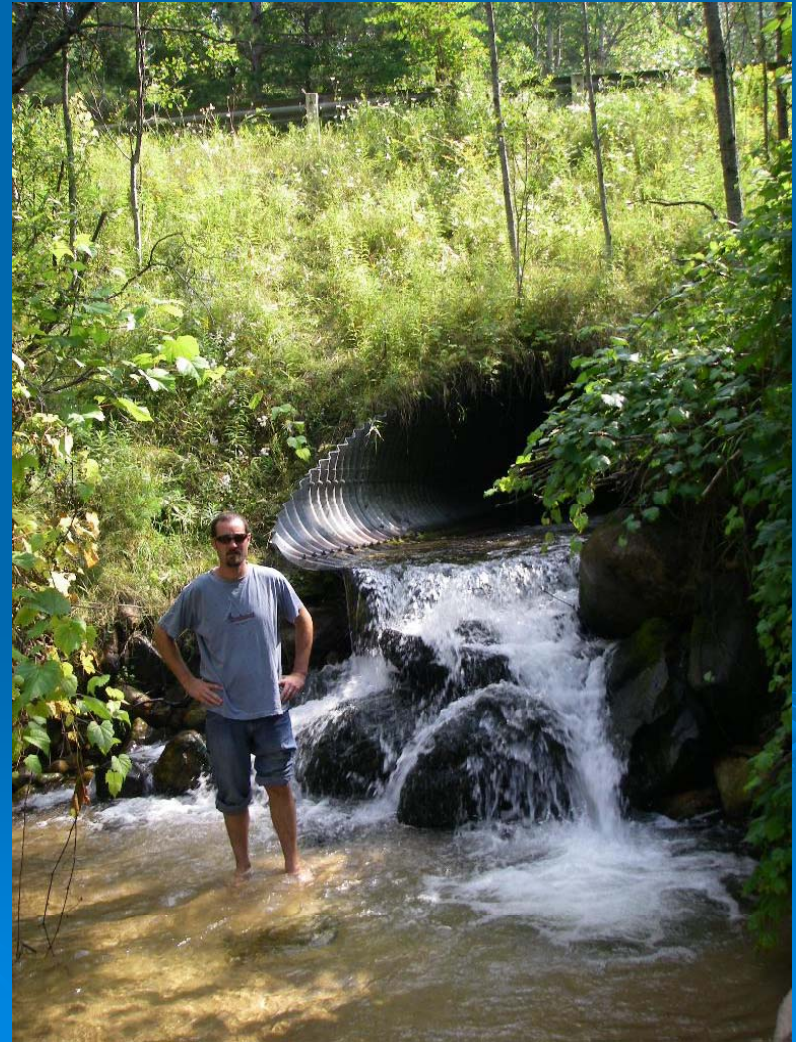


Completed and In-progress Fish Passage projects in Region 3 (1999-2006)

<http://www.fws.gov/fisheries/fwco/fishpassage/>

# National Fish Passage Program

- Types of projects funded:
  - Small dam removal, culvert replacements, fishways, etc.
  - Monitor ongoing and potential NFPP projects
  - Evaluate NFPP implemented projects
  - Conduct inventories to identify NFPP projects and enhance barrier information in the Fish Passage Decision Support System (FPDSS)





# National Fish Passage Program



- **Project selection**

- Selected regionally

- **Emphasis on projects that demonstrate**

- **FWS priorities**

- Trust resources (native species recovery)
- Threatened, Endangered, and Candidate species (federal and state)
- Inter-jurisdictional fish
- Species on federal lands or tribal interest

# National Fish Passage Program

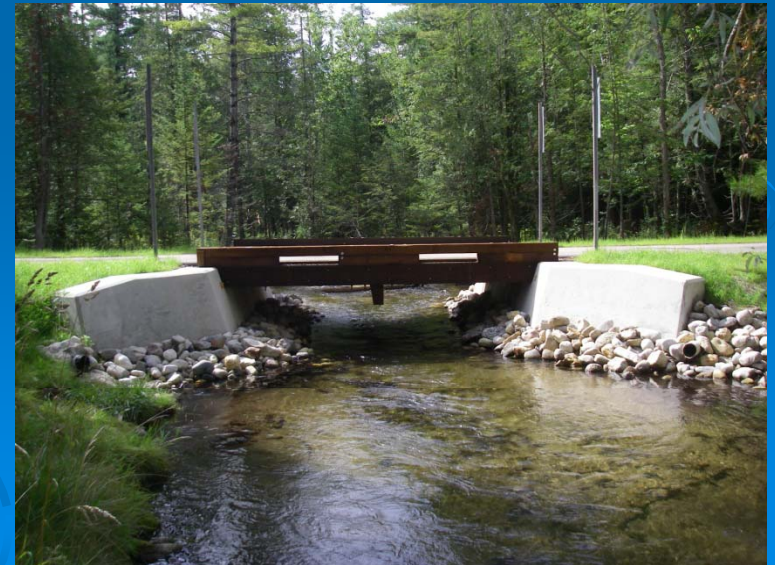
- **Process for project submission**
- **Contact local USFWS fisheries office by September prior to the year of project implementation.**

Lake Michigan Lower - Rick Westerhof (231) 584-3553

- **Projects are ranked by the field office**
- **Projects are ranked by regional offices**
- **Notification of funding usually occurs by spring of the following year.**

# National Fish Passage Program

- Project selection
  - Emphasis on projects that demonstrate:
    - Partner priorities
    - Anticipated benefits to a larger watershed or restoration focus area
    - Probability of completion within a 2 year timeframe



# Partners for Fish & Wildlife

- Applicants – private landowners, NGOs, businesses
- \$10,000 average
- 50% match preferred
- [www.fws.gov.partners](http://www.fws.gov.partners)

# Great Lakes Basin Fish Habitat Partnership

- States, Tribes, Local Governments, Non Profits
- \$10,000 - \$20,000
- No match
- [www.fws.gov/midwest/GLBFHP](http://www.fws.gov/midwest/GLBFHP)



# Great Lakes Fish & Wildlife Restoration Act

- States, Tribes, NGOs
- Average \$97,000 (range \$2,300 - \$2million)
- 25% non-federal match
- Meet goals of Great Lakes Fish & Wildlife Restoration Act.
- <http://www.fws.gov/midwest/fisheries/glfwra-grants.html>

# Berrien County

- USFWS - \$150,000
- Partners\* - \$167,684
- Total = \$317,684
- \*NATS, MDNR, MDOT



2.3 miles stream & 46.5 acres wetland

17.3 miles & 197 acres

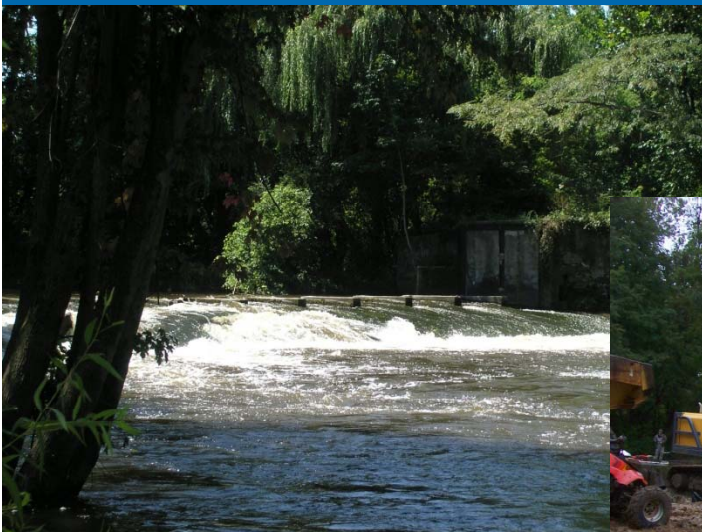
# Van Buren County R.C.

- Great Lakes Commission – SESC Program
- Undersized/improperly placed culverts cause severe scouring, deposition and damage to banks and streams.
- 123 tons/year sediment reduced
- \$20,000 GLC and \$75,000 local
- Berrien County – Watervliet Dams Removal



# Dam Removal & Stream Restoration

- **Watervliet Dams on Paw Paw River**
- National Oceanic and Atmospheric Administration - \$922,759
- Berrien County - \$25,000
- Michigan Department of Natural Resources - \$56,198
- US Fish and Wildlife Service Fish Passage - \$100,000



# Resources & Assistance

- Friends of the St. Joe River Association
- St. Joseph River Basin Commission
- Southwest Michigan Planning Commission
- MDEQ & IDEM
- Soil and Water Conservation Districts
- RC&Ds
- Check out [www.grants.gov](http://www.grants.gov)
  - Searchable
  - Email Notification



# Questions? Other Examples?

