

IDEM

We Protect Hoosiers and Our Environment

Water



Working Around Waterbodies

An overview of IDEM permitting for work in
Waters of the State



October 14, 2011





IDEM's Programs

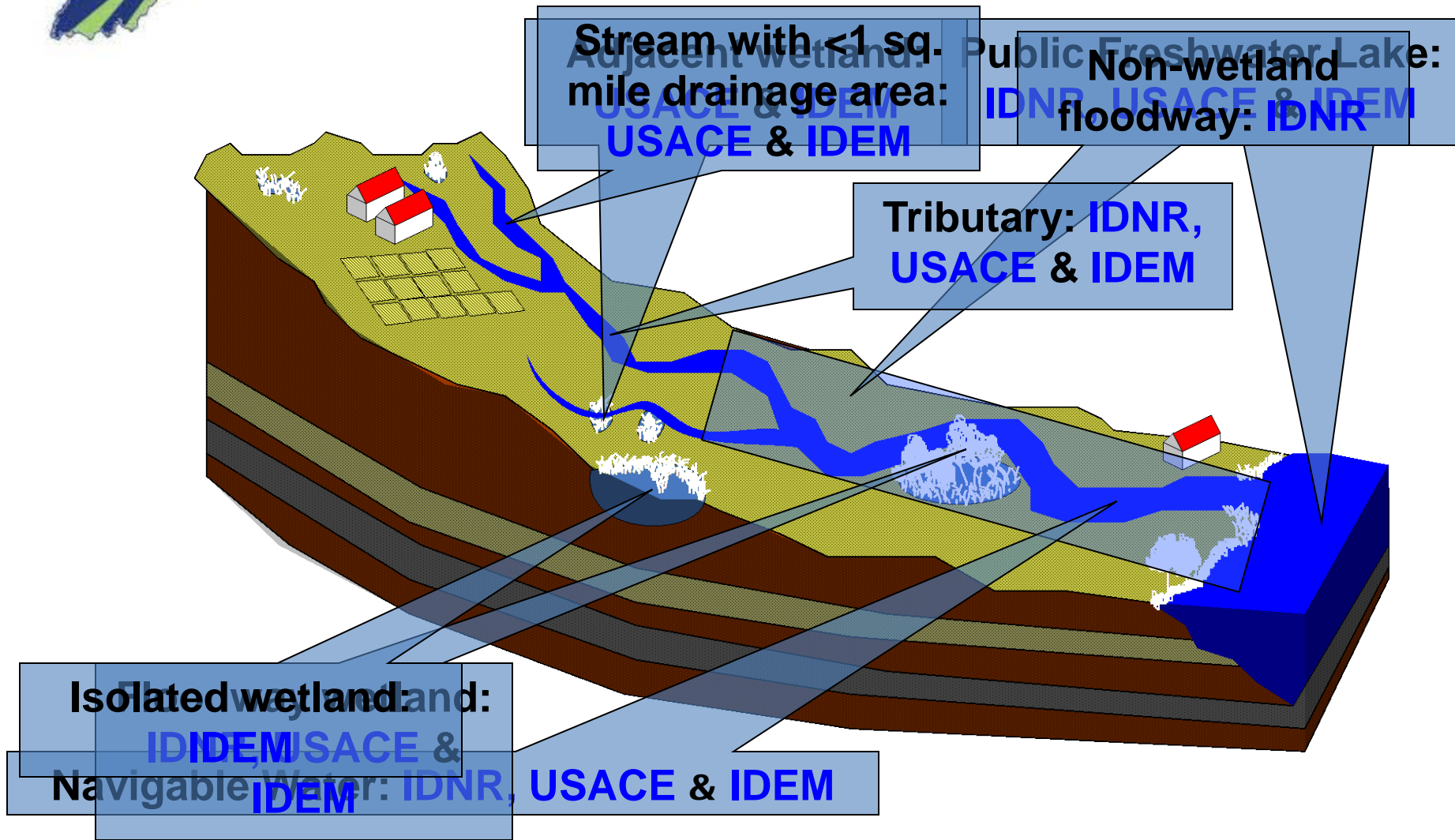
- 401 Water Quality Certification Program
- State Isolated Wetlands Program



NOTE: IDEM is only one of three agencies (others are the IDNR and the USACE) to potentially regulate a project proposing impacts to Water Resources



Who Regulates What?





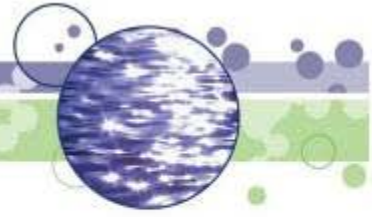
What Activities Does IDEM Regulate?

- IDEM regulates the placement of dredged or fill material into Waters of the U.S. and non-exempt Waters of the State



What Constitutes Fill?

- Dirt, rock, sand, gravel, riprap, etc.
- Pipes and culvert structures (new and replacement structures)
- Dirt or rock placed into an old stream channel if the stream is relocated
- Mechanized land clearing in wetlands (bulldozing) involving removal of stumps
- Sidecasting of dredged material into wetlands
- Damming up streams/pump arounds
- Bank stabilization (streams and lakeshores)



Typical Projects

- Typical regulated projects:
 - Pipe or culvert placement/replacement in streams
 - Streambank armoring (including riprap) for bank stabilization or storm water outfalls
 - Stream relocations or stream piping
 - Wetland fill



Application Review Criteria

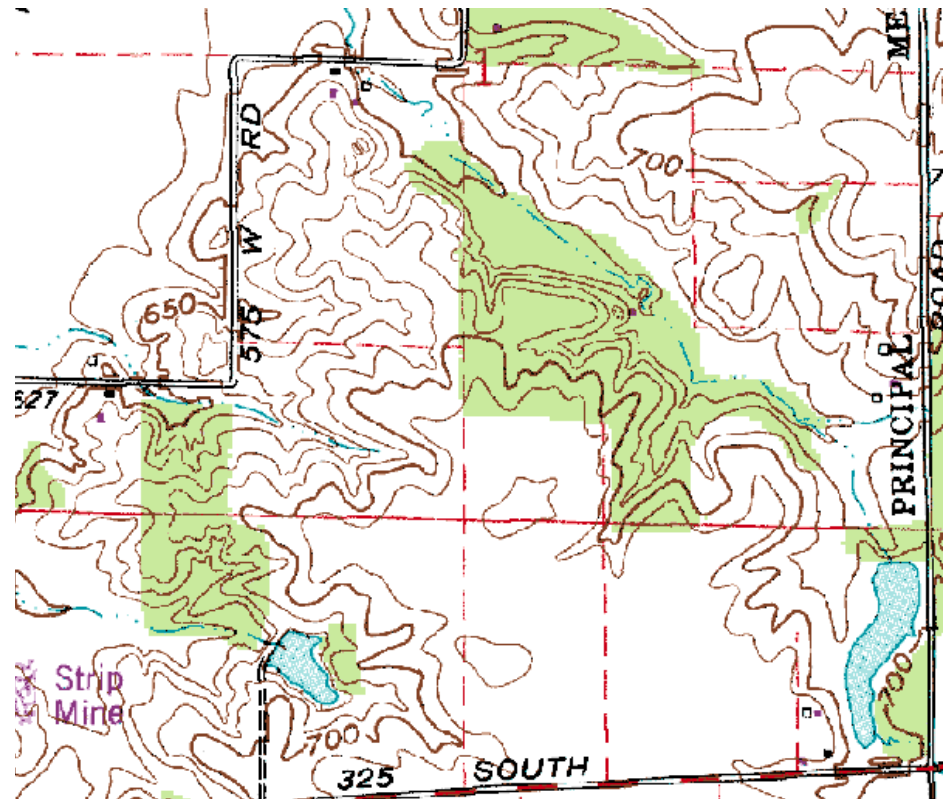
- IDEM evaluates all aspects of a proposed project to determine if there will be detrimental effects to water quality
- IDEM staff assess applicants' efforts to:
 - Avoid impacts to water resources
 - Minimize unavoidable impacts
 - Provide mitigation



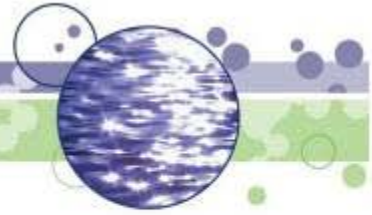


Common Regulatory Myths

- Blue line vs. non-blue line streams
- Confusion over which agencies regulate streams
- Accuracy of the National Wetland Inventory Maps







Recurring Problems with Stream Projects

- Unauthorized and improperly sized structures
- Unsuitable materials for coffer dams, pump-arounds, etc. Improperly installed or no sediment or erosion controls
- Using streams as a water pollution control device

















Avoid Permitting “Surprises”

- Avoid problems:
 - Avoid impacts to wetlands and streams, if possible
 - Have a wetland delineation completed for all sites
- Call for early coordination!
 - Applicants are encouraged to contact IDEM staff to set up an early coordination site visit or field meeting





IDEM Online

Applications

- IDEM Application Forms - www.idem.IN.gov/4388.htm
- Regulatory Service Portal - www.idem.IN.gov/5964.htm

Program Staff

- Project Manager Map - www.idem.IN.gov/4395.htm

Volunteer Mitigation Map

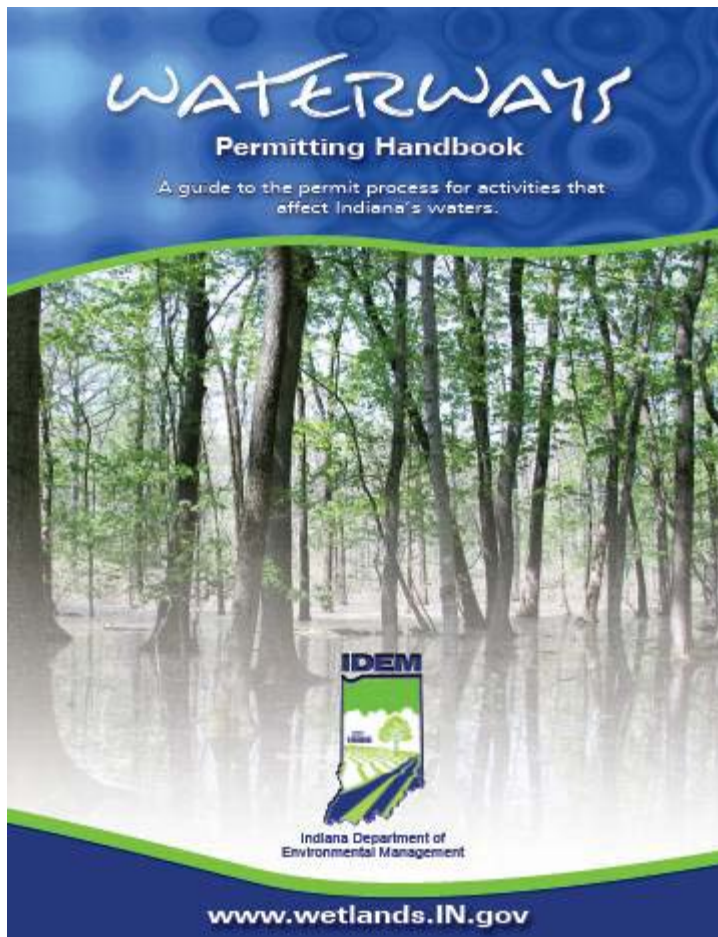
- IDEM Volunteer Mitigation Map Web Tool - <http://idemmaps.idem.IN.gov/apps/MitigationVolunteer>

IDEM Wetlands Information

- All About Wetlands - www.wetlands.IN.gov



Arm Yourself with Info!



WATERWAYS
Permitting Handbook

A guide to the permit process for activities that affect Indiana's waters.

IDEM
Indiana Department of Environmental Management

www.wetlands.IN.gov



**Filling?
Dredging?
Excavating?**

READ THIS FIRST!

A guide to state and federal permits required to work in or along Indiana's wetlands, lakes, rivers, streams and ponds.

IDEM
Indiana Department of Environmental Management



GETTING YOUR FEET WET IN

INDIANA WETLANDS

IDEM
Indiana Department of Environmental Management



Questions?

Aaron McMahan
Wetlands Project Manager
IDEM - Office of Water Quality
100 N. Senate Avenue
Indianapolis, IN 46204

Phone: (317) 234-6351

Email: amcmahan@idem.IN.gov

www.idem.IN.gov/4870.htm

www.idem.IN.gov/5849.htm

